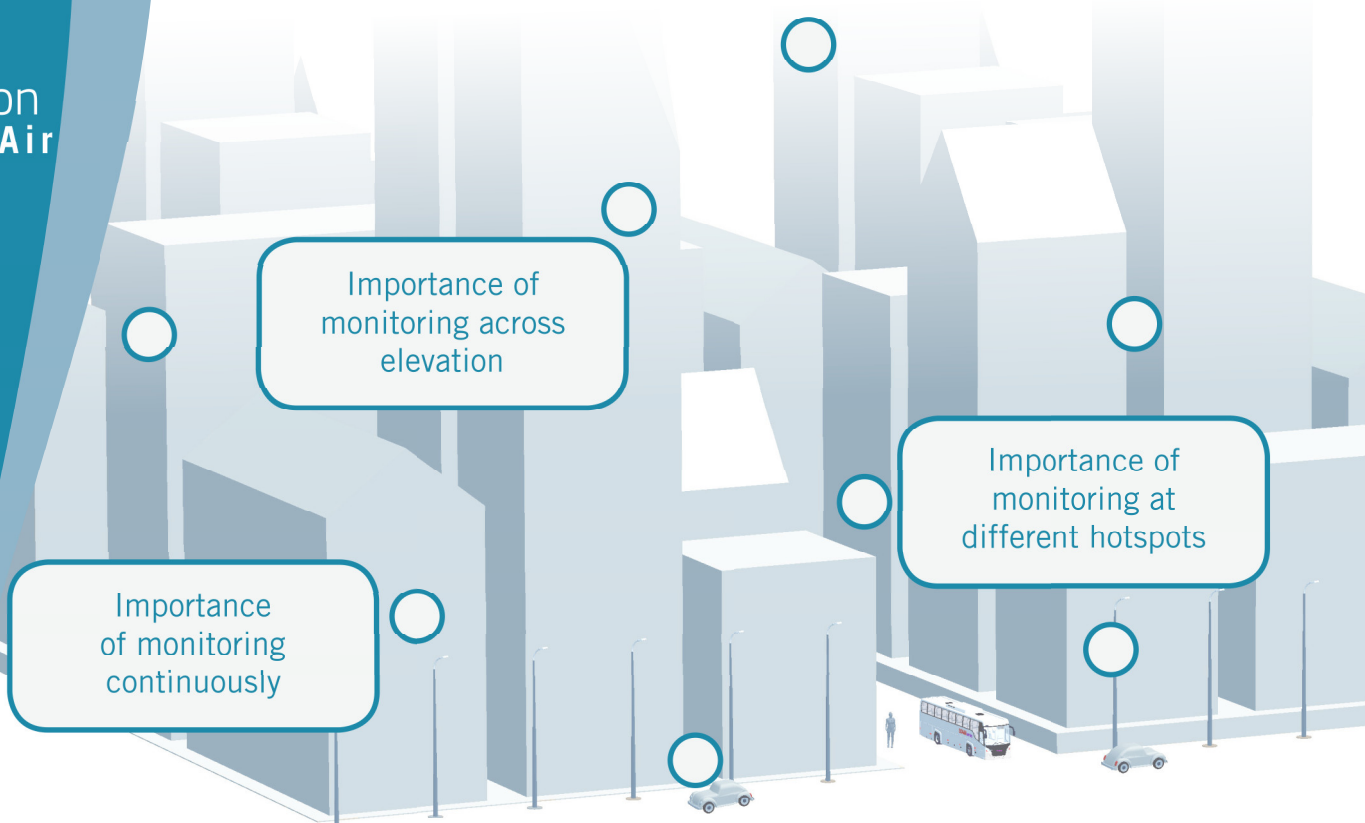
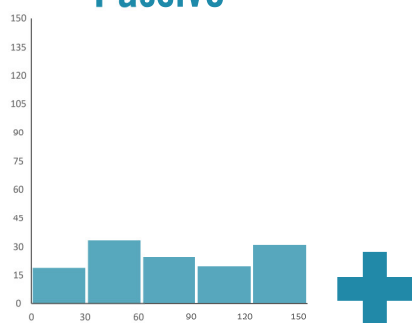


NO₂ Monitoring Combination



NO₂ levels can differ greatly across the city, sometimes even on the same street, due to elevation, congestion, time of day, and greenery. Because of these localized variations it is important to take measurements throughout each neighbourhood and at relevant heights. With the unique combo-solution provided by Insplorion and IVL the pollution of NO₂ can be monitored with a setup easy to install and control. The measurements are indicative and can show how the trend of the pollutant changes over time, and will allow both individuals and policy maker to make better decisions.

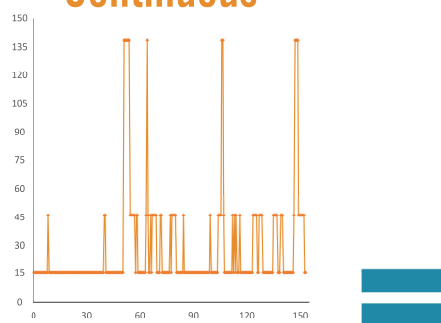
Passive



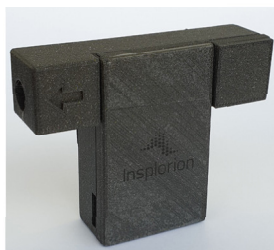
Diffusion tubes are a passive way to monitor NO₂ levels and are approved by the EU as indicative measurements. The NO₂ levels are given as an average over a monthly period.



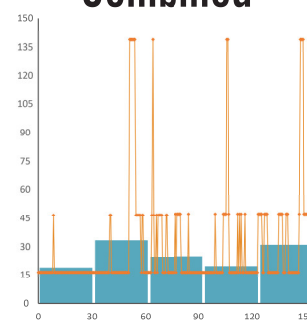
Continuous



Insplorion's sensor measures NO₂ levels on a continuous basis, and reports hourly, thereby offering greater time resolution. The numeric values are converted to an indexed scale for easy interpretation.



Combined



While NO₂ levels averaged over the month can give an overall idea of how polluted a certain area may be, they cannot pinpoint the day or time of a spike in pollution.

By combining the two techniques your city can benefit from the accuracy of diffusion tubes, and the time resolution of InAir.

Contact Us
info@insplorion.com